



REGOGNIZING

THE AIRPORT MEGAZONE

AND ITS ROLE IN THE TORONTO REGION

A PRESENTATION TO THE THE GTAA

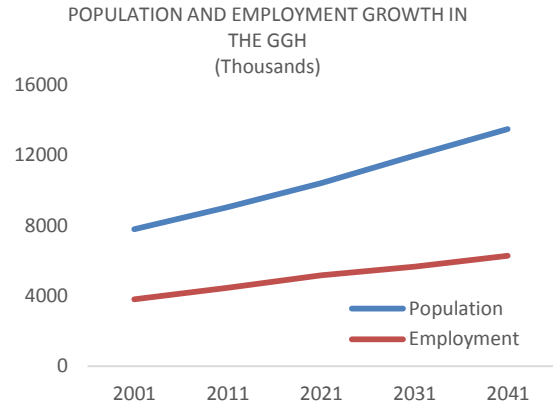
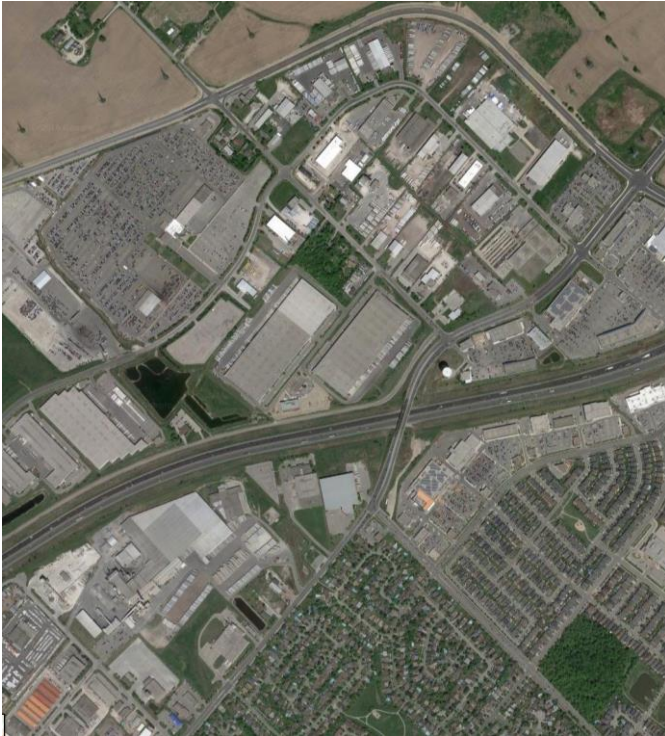
BY

PAMELA BLAIS, PHD RPP MCIP, PRINCIPAL, **METROPOLE** CONSULTANTS

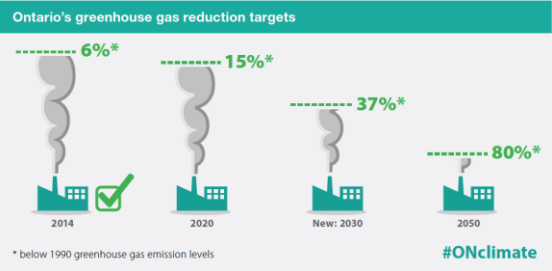
NOVEMBER 7, 2016

OUR REGION FACES MANY CHALLENGES

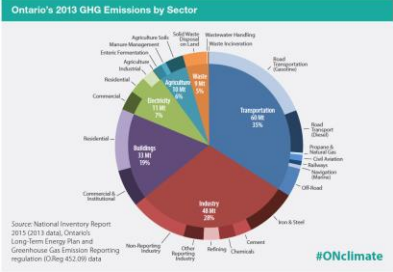
MANAGING RAPID GROWTH AND PROVIDING INFRASTRUCTURE



AUTO DEPENDENCE, GHGS, CONGESTION



\$11,000,000,000/yr



ADDRESSING THE CHALLENGES

PLACES TO GROW
BETTER CHOICES. BRIGHTER FUTURE.

Growth Plan

for the Greater Golden Horseshoe, 2006

OFFICE CONSOLIDATION, JUNE 2013

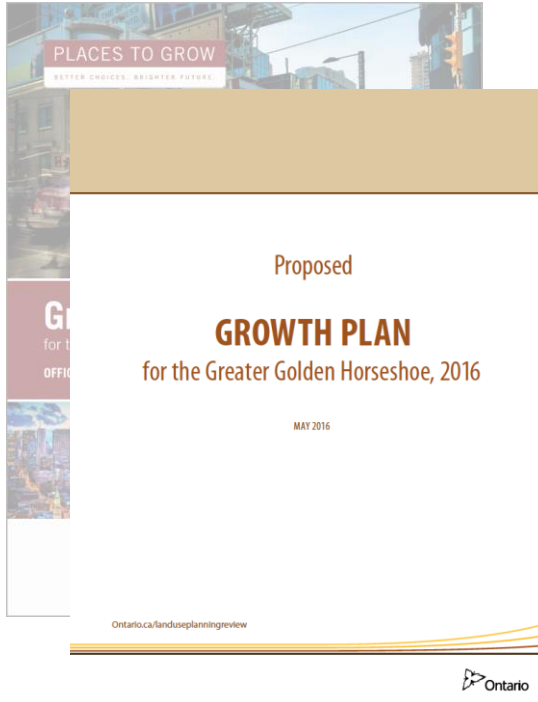
Ontario
Ministry of Infrastructure

THE BIG MOVE

TRANSFORMING TRANSPORTATION IN THE GREATER TORONTO AND HAMILTON AREA

METROLINX
LINKING PEOPLE TO PLACES - OR YET
An agency of the Government of Ontario

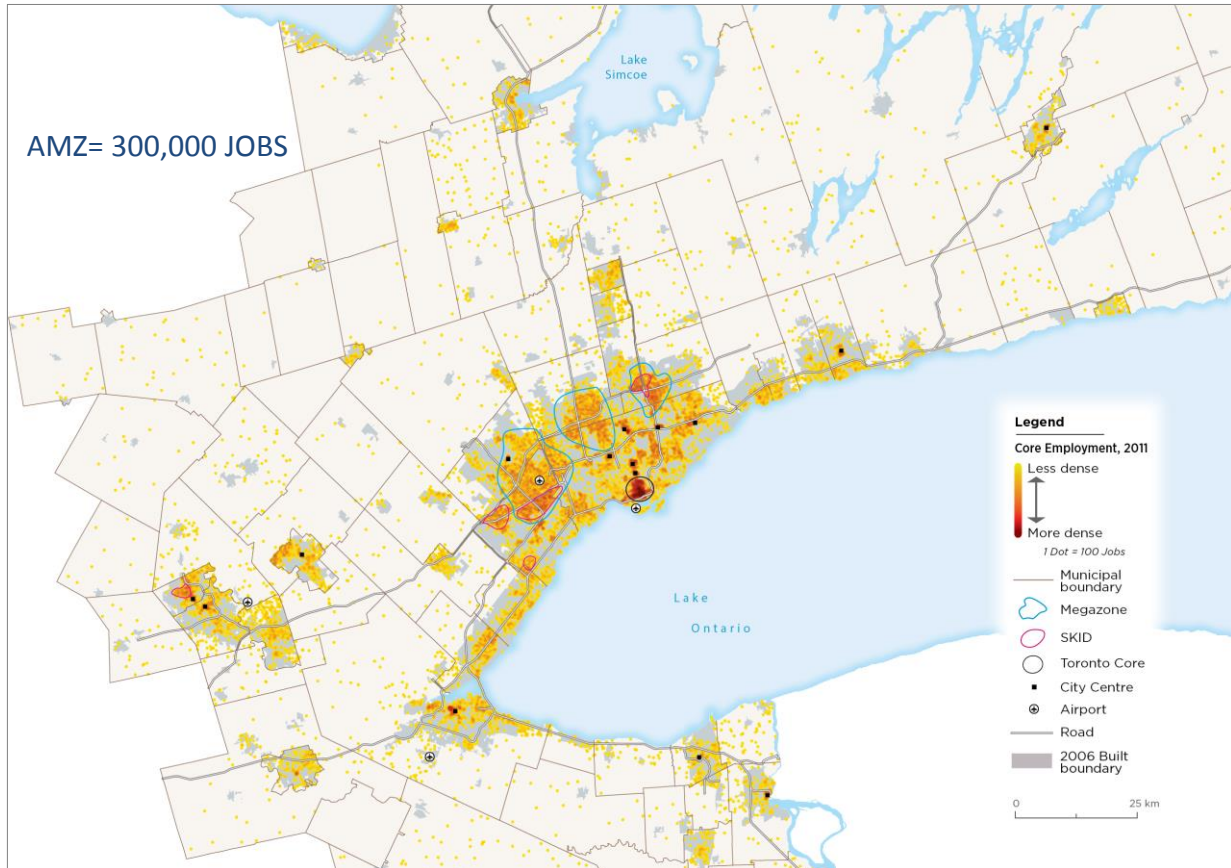
A KEY MOMENT



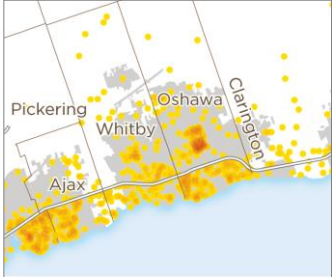
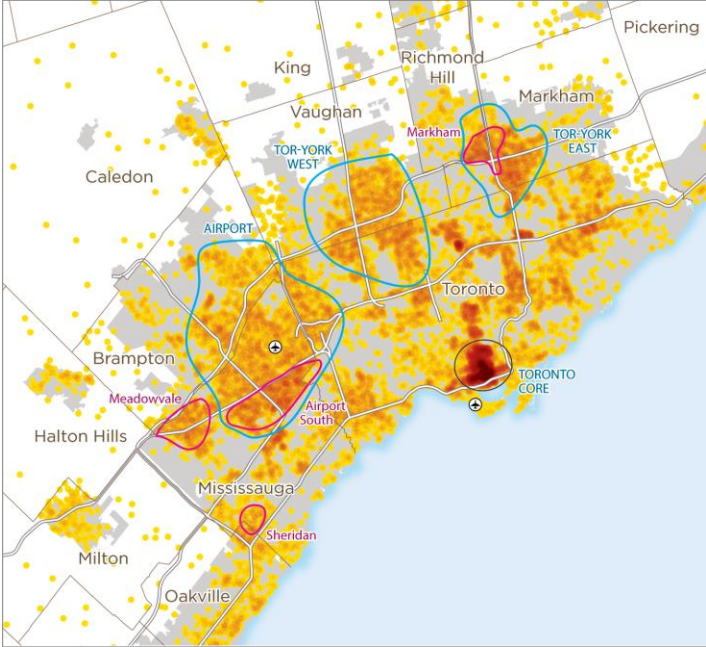
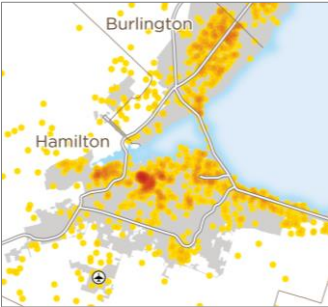
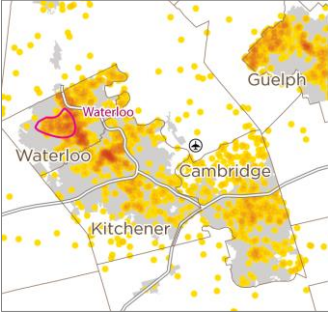


WHAT IS THE AMZ AND WHY IS CRITICAL TO THE SUCCESS OF THE REGION

A SIGNIFICANT CONCENTRATION OF JOBS

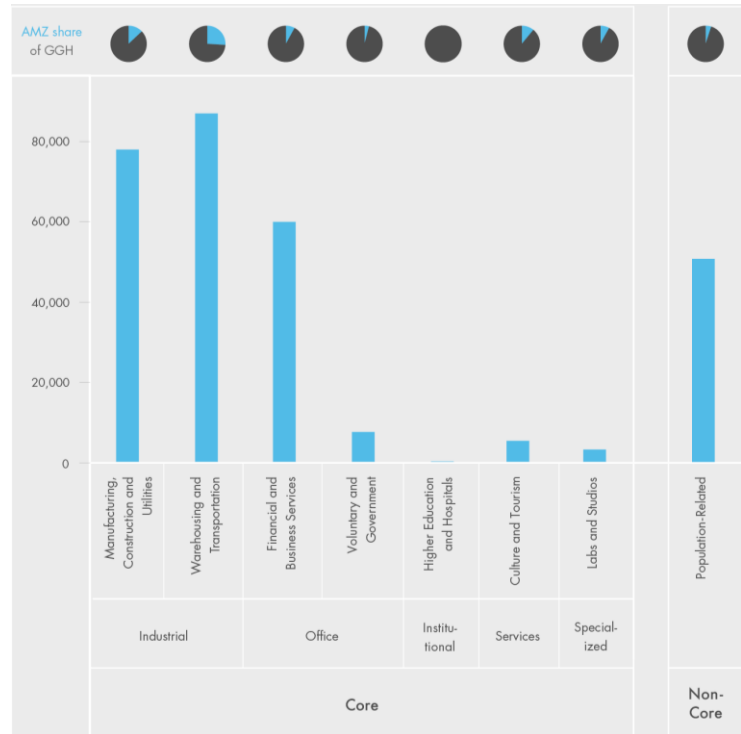


INCLUDES ONE OF FIVE REGIONAL "SKIDS"



CONCENTRATIONS IN KEY INDUSTRIES

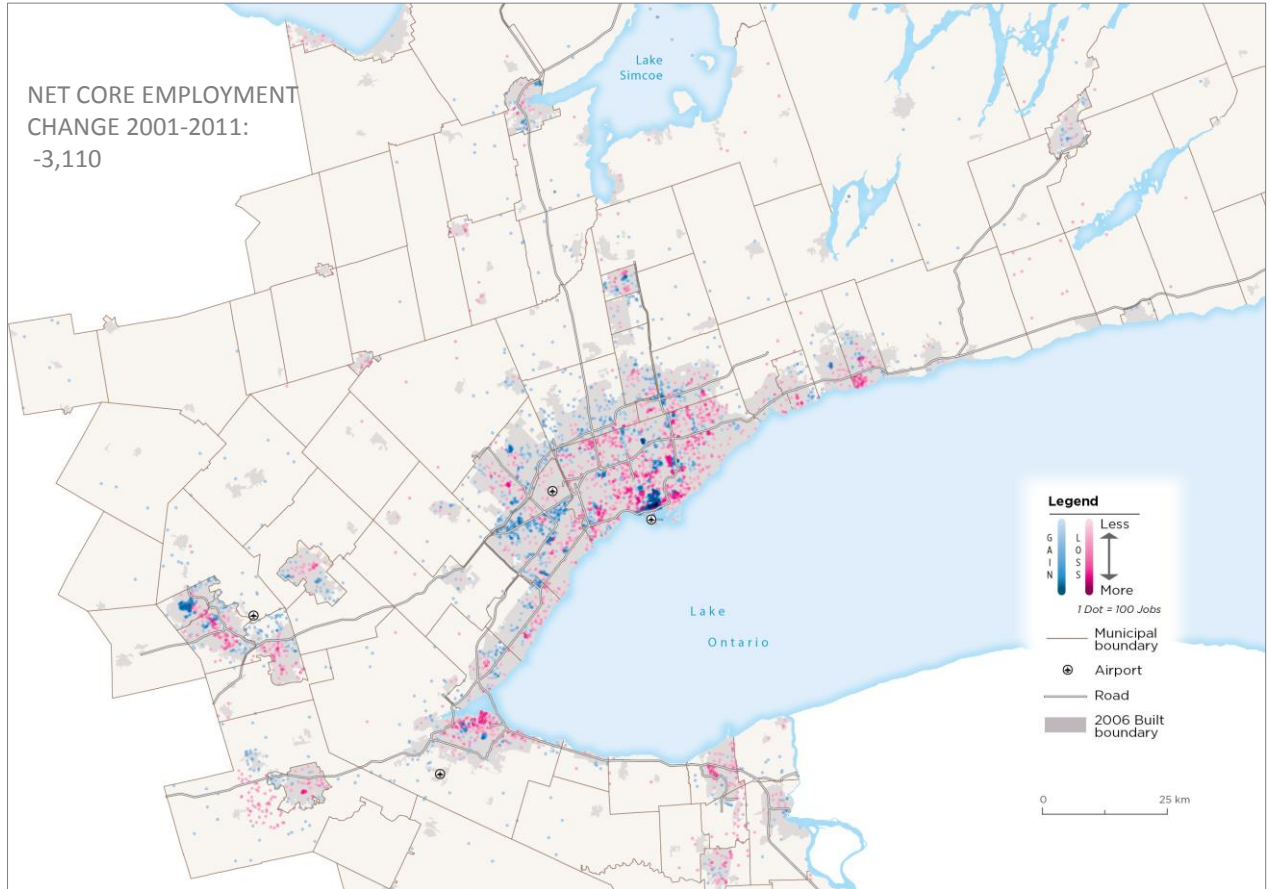
- Tradeable, “core” activities
- Warehousing and transportation jobs
- 60,000 finance and business services jobs



AMZ EMPLOYMENT, 2011

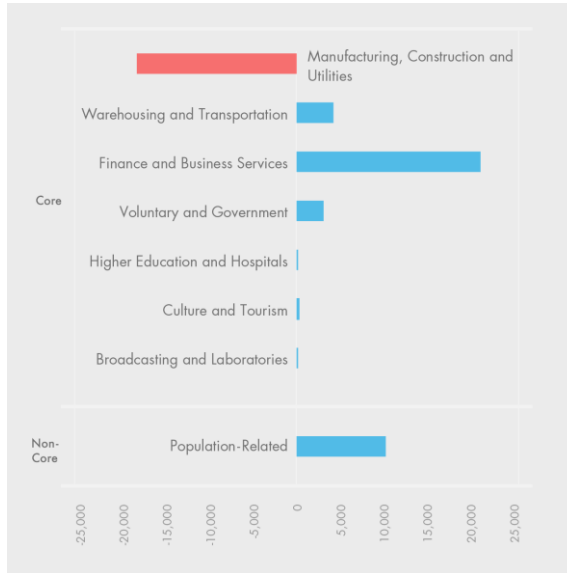
IT'S ONE OF FEW GROWTH LOCATIONS

NET CORE EMPLOYMENT
CHANGE 2001-2011:
-3,110



ATTRACTING 40,000 JOBS

-18,630



+20,725

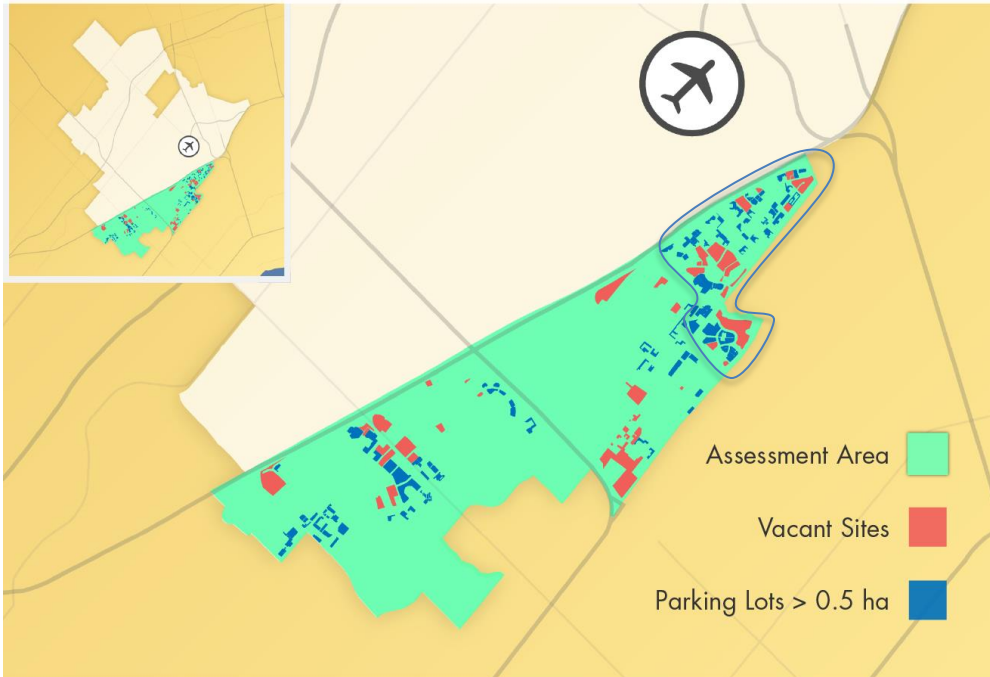
NET CHANGE
CORE EMPLOYMENT: +10,660
TOTAL EMPLOYMENT: +22,550

AMZ EMPLOYMENT CHANGE BY SECTOR, 2001-2011

IT CONTAINS MANY ECONOMIC ASSETS



IT HOLDS SIGNIFICANT DEVELOPMENT POTENTIAL



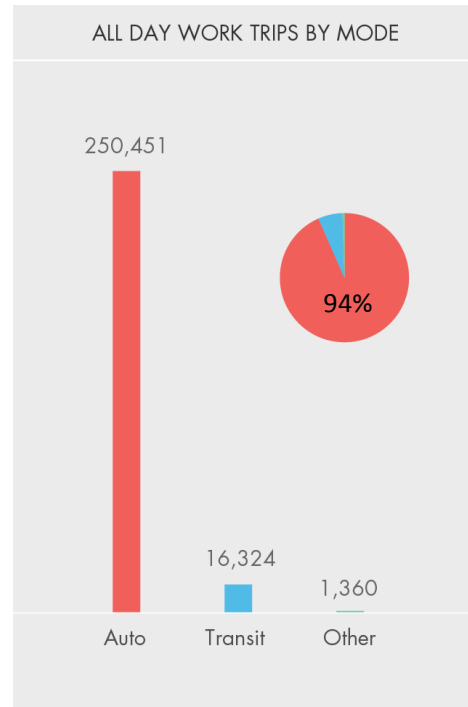
WITHIN ACC ONLY
Vacant sites: 57 ha
Surface parking: 60 ha
Est. 50-70,000 more jobs

IT GENERATES A LOT OF TRAVEL, ALMOST ALL BY CAR

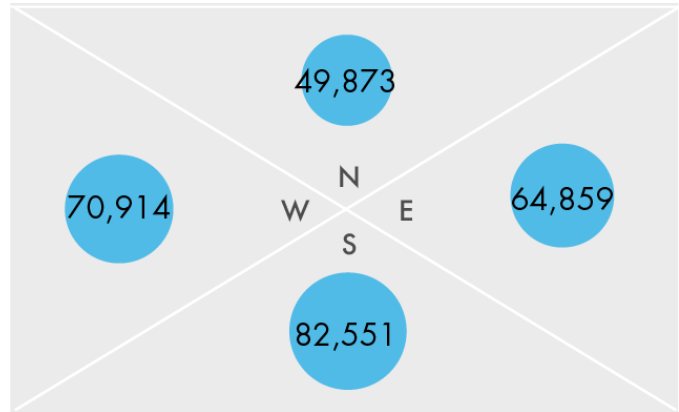
TOTAL DAILY **WORK** TRIPS TO THE AMZ:
268,000

TOTAL DAILY **ALL-PURPOSE** TRIPS TO THE AMZ:
546,000

ALL TOLD, **OVER 1 MILLION DAILY TRIPS TO AND FROM**



WORKERS ARRIVE FROM ALL DIRECTIONS

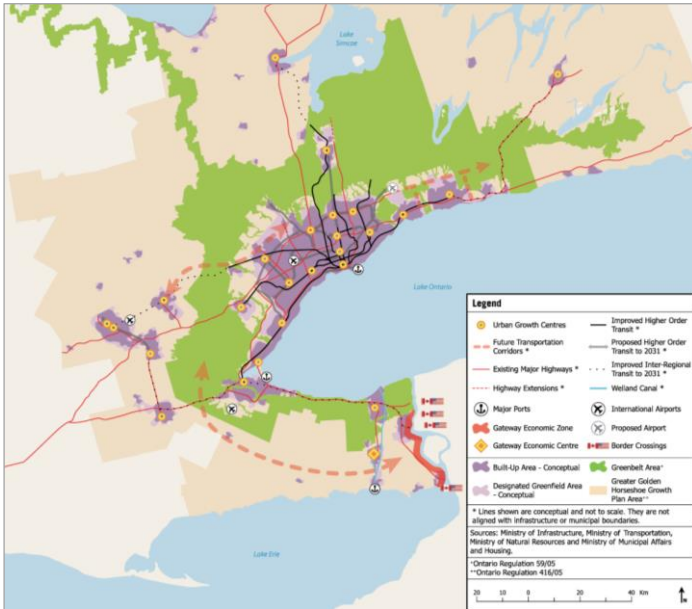


ORIGIN OF TRAVEL, WORK TRIPS

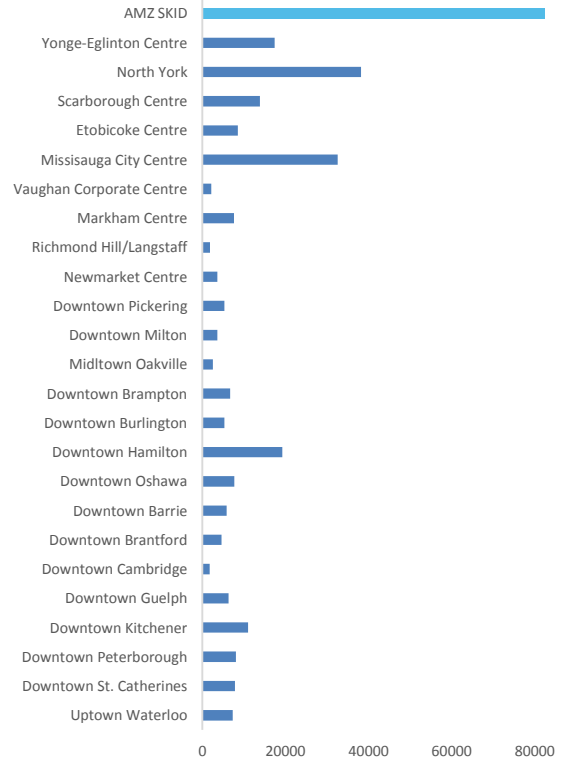
HOW DO OUR CURRENT PLANS ADDRESS THE AMZ?

WHERE THE JOBS AREN'T

GROWTH PLAN CONCEPT

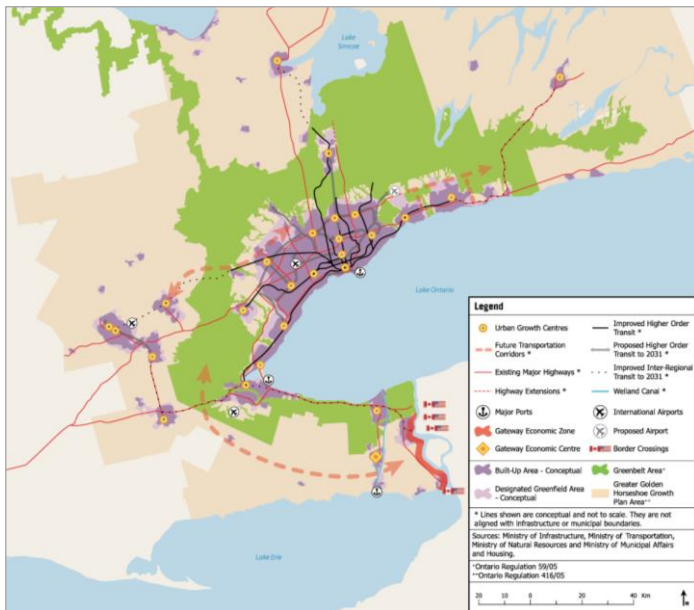


UGCS TOTAL EMPLOYMENT, 2011

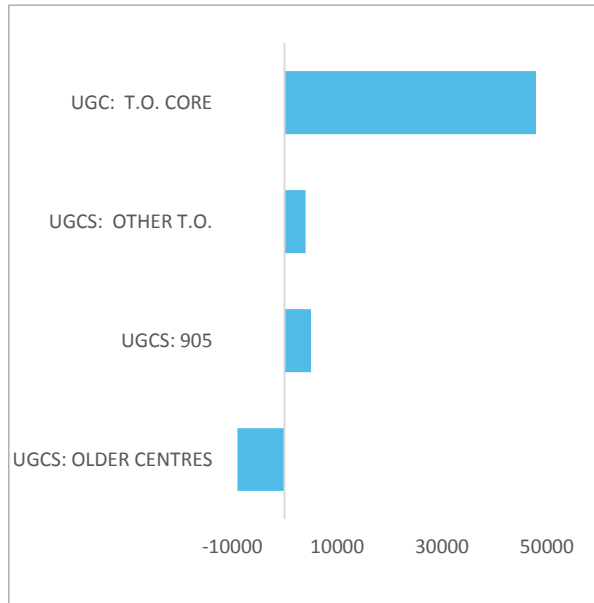


WHERE THE GROWTH ISN'T

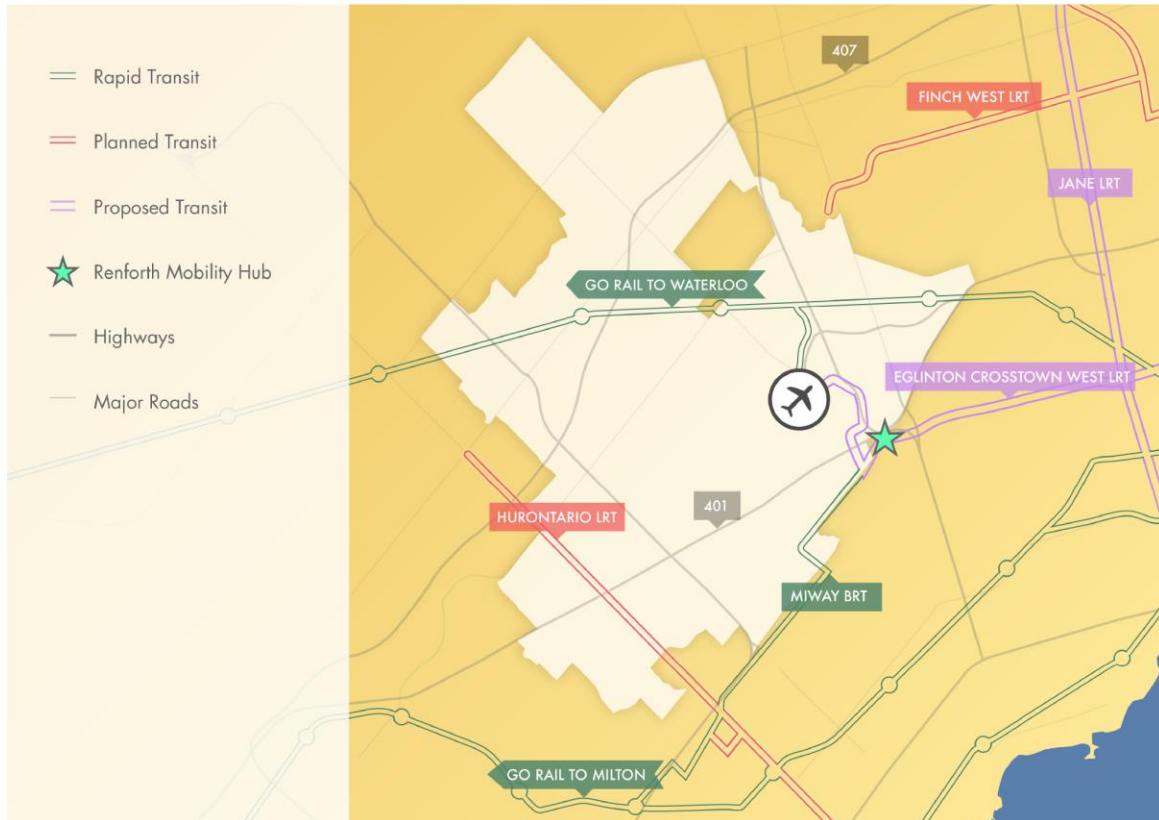
GROWTH PLAN CONCEPT



EMPLOYMENT CHANGE 2006-2011



TRANSIT TO THE AMZ



TO ADDRESS OUR REGION'S CHALLENGES

- 1.** Recognize the AMZ & other Megazones in the Growth Plan
- 2.** Transportation investments need to be chosen, prioritized and planned on a TRULY REGIONAL basis
- 3.** An AMZ-centric transportation plan is needed
- 4.** Create reurbanization plans for the AMZ and other megazones
 - Addressing the megazone as a whole
 - Integrating transit, land use/reurbanization and economic development planning

THANK YOU